

York County
2023 Coastal Sand Dune Breakdown

Total 2023 Sand Dune Maps:	77
No Change to Existing 2011 Maps:	52
Change to 2011 Map:	6
New Maps (not previously mapped as a sand dune):	19

Change to 2011 Maps:

1. Swards Cove, Kittery
 - Small expansion of D1 (frontal dune)
 - Land part of Gerrish Island Conservation
2. Wells Beach North, Wells
 - New D2 (back dune) along shoreline of Webannet River Boat Yard and Hobbs Harborside
3. Colony Beach, Kennebunkport
 - New D1 & D2 on land owned by Town and St. Annes Episcopal Church
4. Little River, Biddeford
 - Small expansion of D1 on Timber Point
5. Curtis Cove, Biddeford
 - Expansion of D1 & D2 upper Timber Point Rd
6. Horseshoe Cove, Biddeford
 - Small expansion of D2 at mouth of wetland

New Maps:

Commercial and residential properties affected

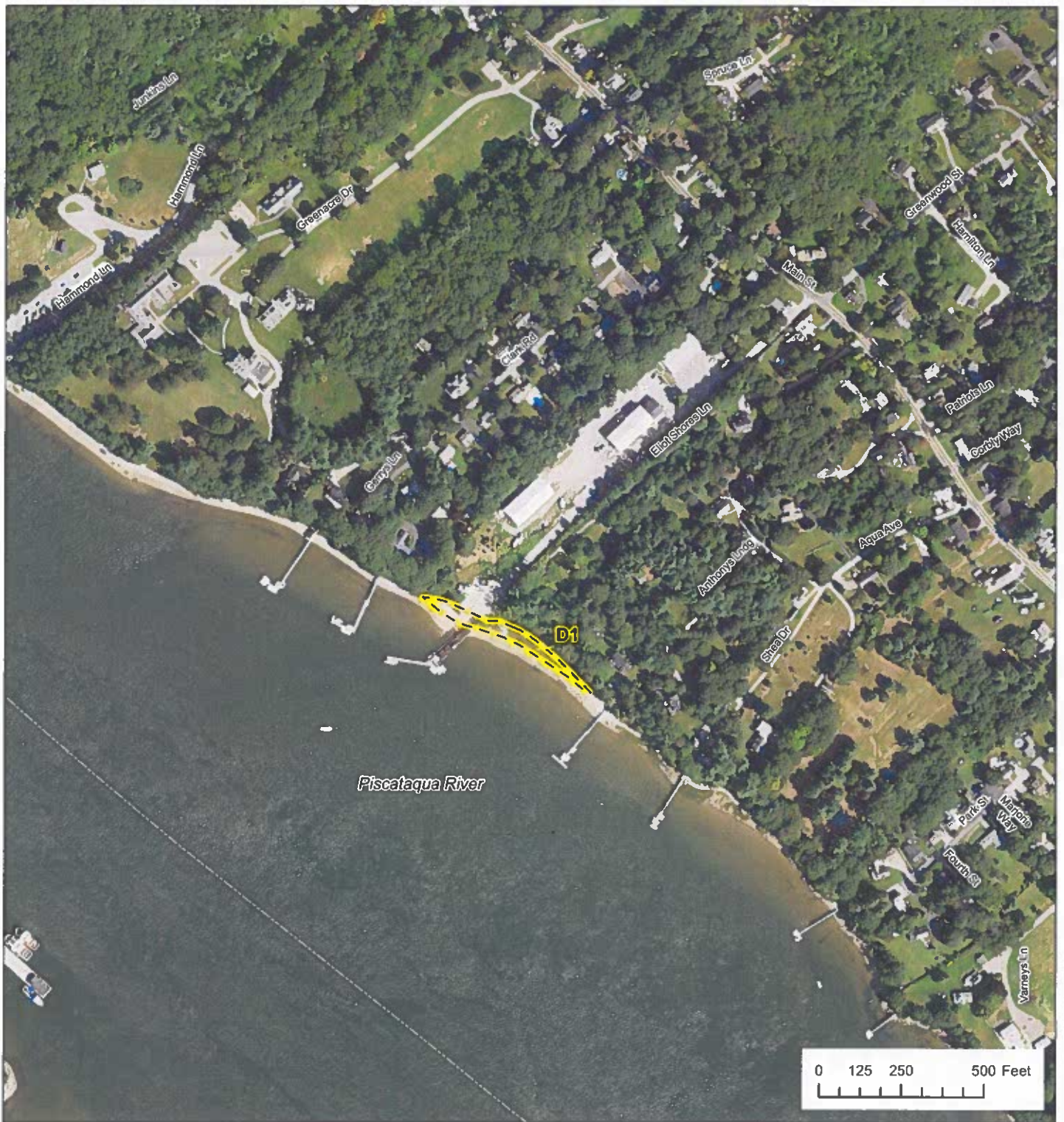
Stand outs include:

- New D1 & D2 encompassing all of Perkins Cove Road, Ogunquit
- New D1 & D2 the length of Skipper Joes Point Road, Kennebunkport
- New D1 most of Marshall Point Road, Kennebunkport

ELIOT

1 NEW MAP

ELIOT SHORES



Maine Geological Survey

Address: 93 State House Station, Augusta, Maine 04333
Telephone: 207-287-2801 **E-mail:** mgs@maine.gov
Home page: www.maine.gov/dacf/mgs/

Coastal Sand Dune Geology Eliot Shores, Eliot, Maine

by Peter A. Slovinsky and Stephen M. Dickson
 Open-File Map No. 23-22
 2023

KITTERY

1 NEW MAP

GERRISH ISLAND, NW

1 SUPERSEDED MAP

SEWARDS COVE



Maine Geological Survey

Address: 93 State House Station, Augusta, Maine 04333
Telephone: 207-287-2801 **E-mail:** mgs@maine.gov
Home page: www.maine.gov/dacf/mgs/

Coastal Sand Dune Geology Gerrish Island Northwest, Kittery, Maine

by Peter A. Slovinsky and Stephen M. Dickson
 Open-File Map No. 23-23
 2023



Maine Geological Survey

Address: 93 State House Station, Augusta, Maine 04333
Telephone: 207-287-2801 **E-mail:** mgs@maine.gov
Home page: www.maine.gov/dacf/mgs/

Coastal Sand Dune Geology Seward's Cove, Gerrish Island, Kittery, Maine

by Peter A. Slovinsky and Stephen M. Dickson

Open-File Map No. 23-25
 2023

This map supersedes Open-File Map No. 11-61



Maine Geological Survey

Address: 22 State House Station
Augusta, Maine 04333

Telephone: 207-287-2801
E-mail: mgs@maine.gov

Home page: <http://www.maine.gov/doc/nrimc/nrimc.htm>

See back for description of map units.

Coastal Sand Dune Geology Searsville Cove, Gerrish Island, Kittery, Maine

by Peter A. Slovinsky and Stephen M. Dickson

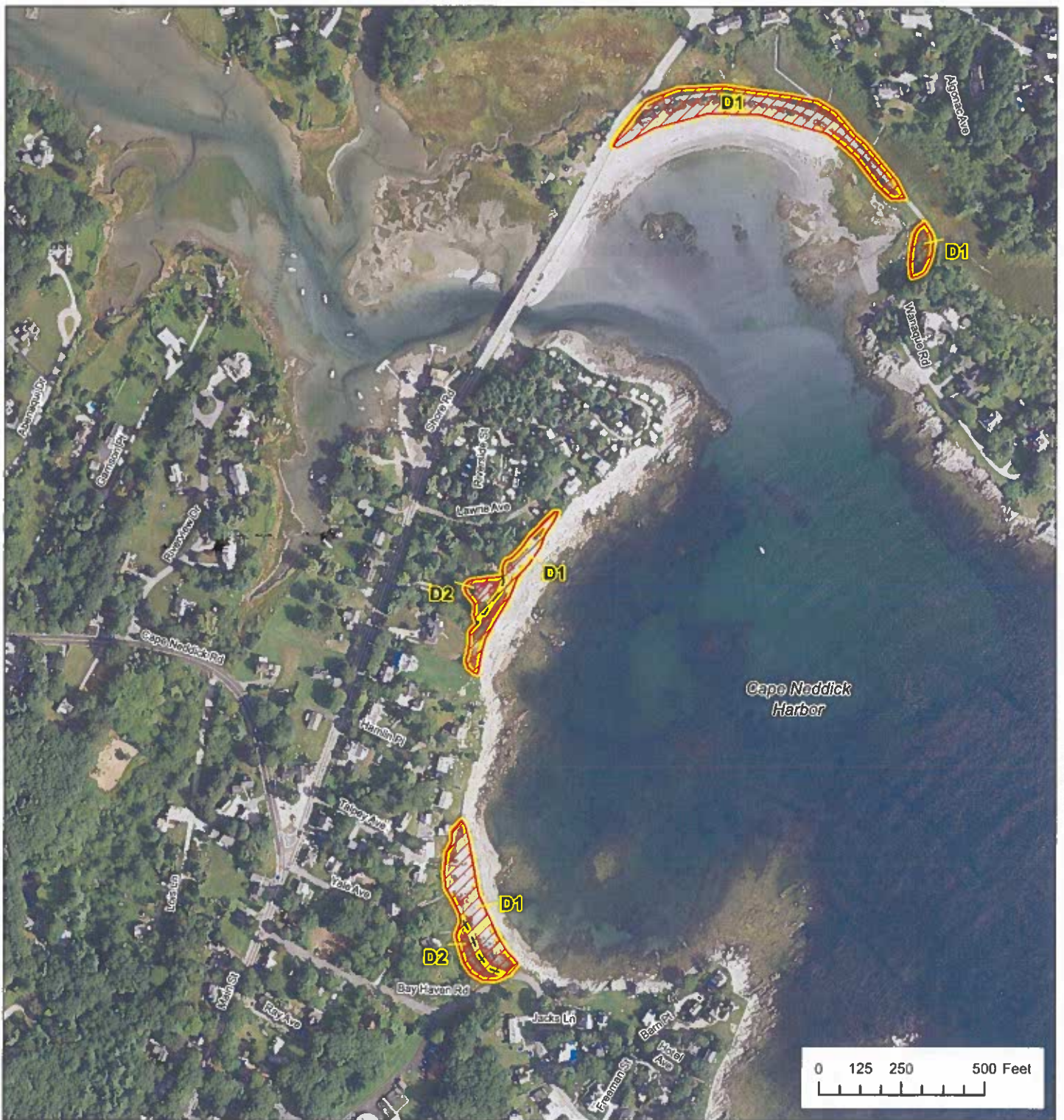
Open-File No. 11-61

2011 **SUPERSEDED**

YORK

4 NEW MAPS

CAPE NEDDICK HARBOR
PINT COVE
WADDELL POND
PHILLIPS COVE



Maine Geological Survey

Address: 93 State House Station, Augusta, Maine 04333
Telephone: 207-287-2801 **E-mail:** mgs@maine.gov
Home page: www.maine.gov/dacf/mgs/

Coastal Sand Dune Geology Cape Neddick Harbor, York, Maine

by Peter A. Slovinsky and Stephen M. Dickson

Open-File Map No. 23-40
2023



Maine Geological Survey

Address: 93 State House Station, Augusta, Maine 04333
Telephone: 207-287-2801 **E-mail:** mgs@maine.gov
Home page: www.maine.gov/dacf/mgs/

Coastal Sand Dune Geology Pint Cove, York, Maine

by Peter A. Slovinsky and Stephen M. Dickson
 Open-File Map No. 23-41
 2023



Maine Geological Survey

Address: 93 State House Station, Augusta, Maine 04333
Telephone: 207-287-2801 **E-mail:** mgs@maine.gov
Home page: www.maine.gov/dacf/mgs/

Coastal Sand Dune Geology Waddell Pond, York, Maine

by Peter A. Slovinsky and Stephen M. Dickson
 Open-File Map No. 23-42
 2023



Maine Geological Survey

Address: 93 State House Station, Augusta, Maine 04333
Telephone: 207-287-2801 **E-mail:** mgs@maine.gov
Home page: www.maine.gov/dacf/mgs/

Coastal Sand Dune Geology Phillips Cove, York, Maine

by Peter A. Slovinsky and Stephen M. Dickson
 Open-File Map No. 23-43
 2023

OGUNQUIT

1 NEW MAP

OARWEED COVE

WELLS

1 SUPERSEDED MAP

WELLS BEACH, NORTH



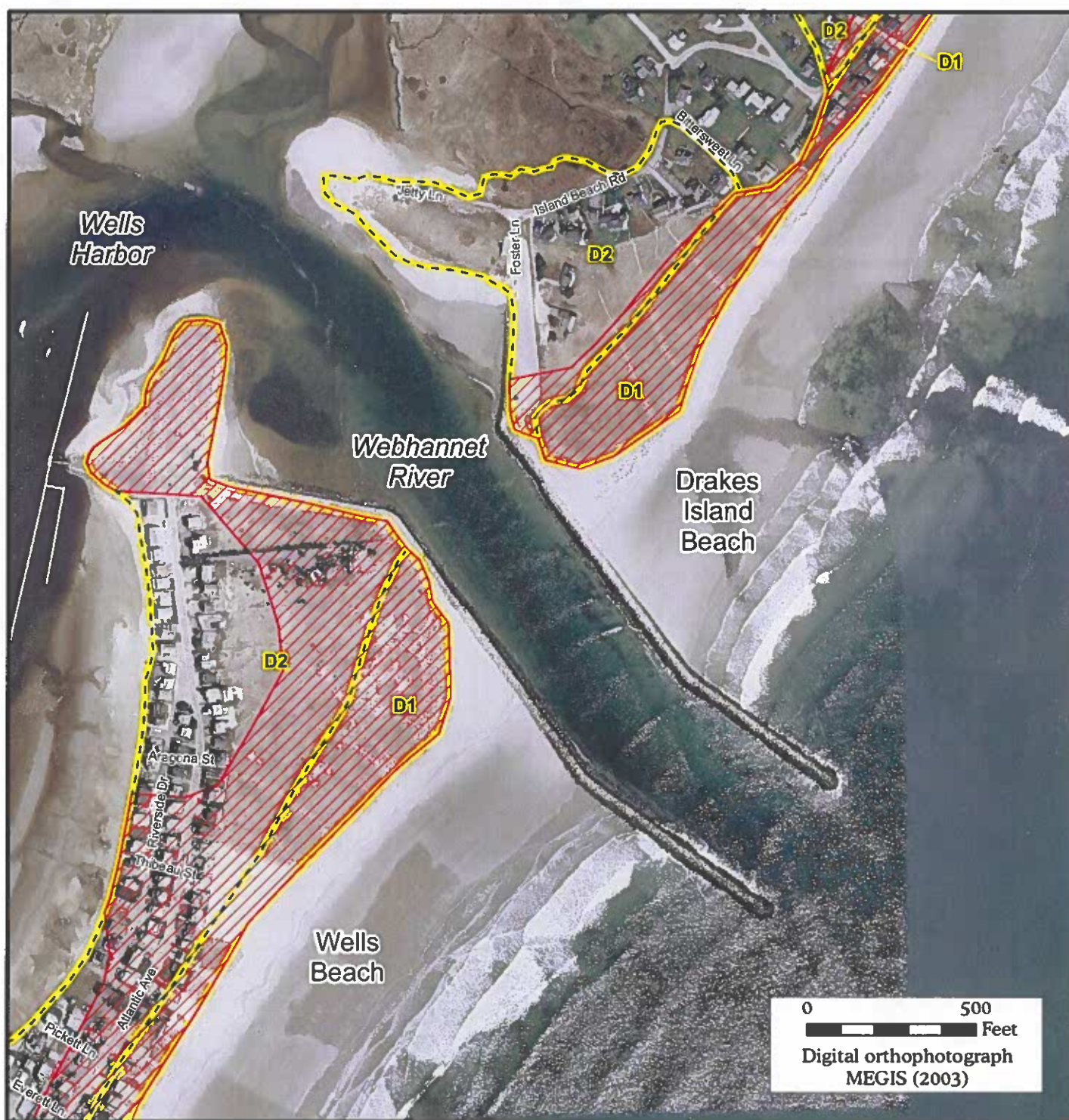
Maine Geological Survey

Address: 93 State House Station, Augusta, Maine 04333
Telephone: 207-287-2801 **E-mail:** mgs@maine.gov
Home page: www.maine.gov/dacf/mgs/

Coastal Sand Dune Geology Wells Beach North, Wells, Maine

by Peter A. Slovinsky and Stephen M. Dickson
Open-File Map No. 23-54
2023

This map supersedes Open-File Map No. 11-85



Maine Geological Survey

Address: 22 State House Station
Augusta, Maine 04333

Telephone: 207-287-2801
E-mail: mgs@maine.gov

Home page: <http://www.maine.gov/doc/nrimc/nrimc.htm>

See back for description of map units.

Coastal Sand Dune Geology Wells Beach, North, Wells, Maine

by Peter A. Slovinsky and Stephen M. Dickson

Open-File No. 11-85

2011 **SUPERSEDED**

KENNEBUNKPORT

7 NEW MAPS

SANDY COVE
CLEAVES COVE/TURBATS CREEK
VAUGHN ISLAND
GREEN, FOLEY GOAT ISLANDS
STAVE ISLAND
NESSLER POINT
MARSHALL POINT

1 SUPERSEDED MAP

GOOCHS/COLONY BEACH



Maine Geological Survey

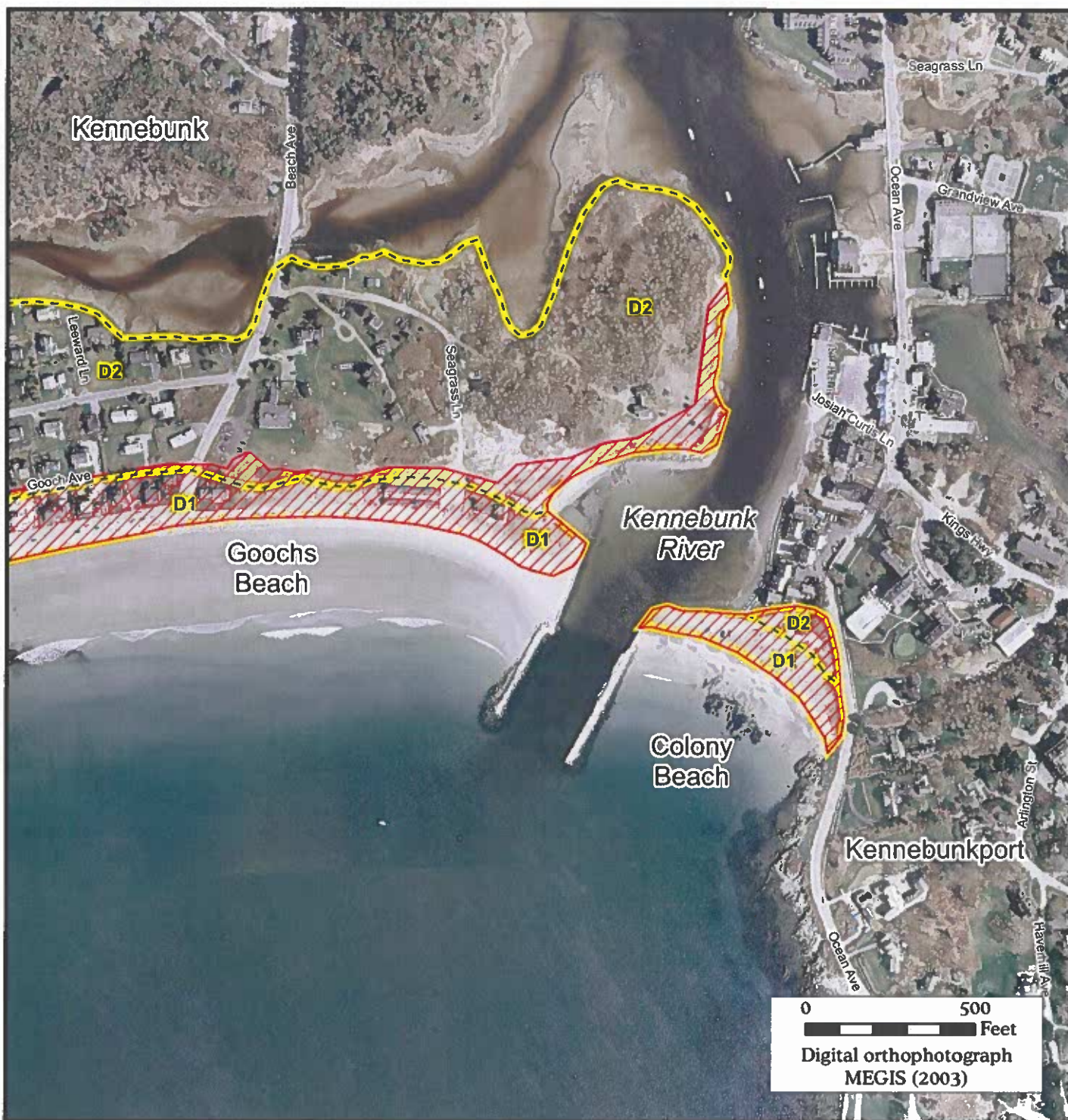
Address: 93 State House Station, Augusta, Maine 04333
Telephone: 207-287-2801 **E-mail:** mgs@maine.gov
Home page: www.maine.gov/dacf/mgs/

Coastal Sand Dune Geology Goochs Beach and Colony Beach, Kennebunk and Kennebunkport, Maine

by Peter A. Slovinsky and Stephen M. Dickson

Open-File Map No. 23-63
 2023

This map supersedes Open-File Map No. 11-94



Maine Geological Survey

Address: 22 State House Station
Augusta, Maine 04333

Telephone: 207-287-2801
E-mail: mgs@maine.gov

Home page: <http://www.maine.gov/doc/nrimc/nrimc.htm>

See back for description of map units.

Coastal Sand Dune Geology Goochs Beach and Colony Beach, Kennebunk and Kennebunkport, Maine

by Peter A. Slovinsky and Stephen M. Dickson

Open-File No. 11-94

2011 **SUPERSEDED**



Maine Geological Survey

Address: 93 State House Station, Augusta, Maine 04333
Telephone: 207-287-2801 **E-mail:** mgs@maine.gov
Home page: www.maine.gov/dacf/mgs/

Coastal Sand Dune Geology

Sandy Cove and Walkers Point,
 Kennebunkport, Maine

by Peter A. Slovinsky and Stephen M. Dickson

Open-File Map No. 23-64
 2023



Maine Geological Survey

Address: 93 State House Station, Augusta, Maine 04333
Telephone: 207-287-2801 **E-mail:** mgs@maine.gov
Home page: www.maine.gov/dacf/mgs/

Coastal Sand Dune Geology

Cleaves Cove and Turbats Creek,
 Kennebunkport, Maine

by Peter A. Slovinsky and Stephen M. Dickson

Open-File Map No. 23-65
 2023

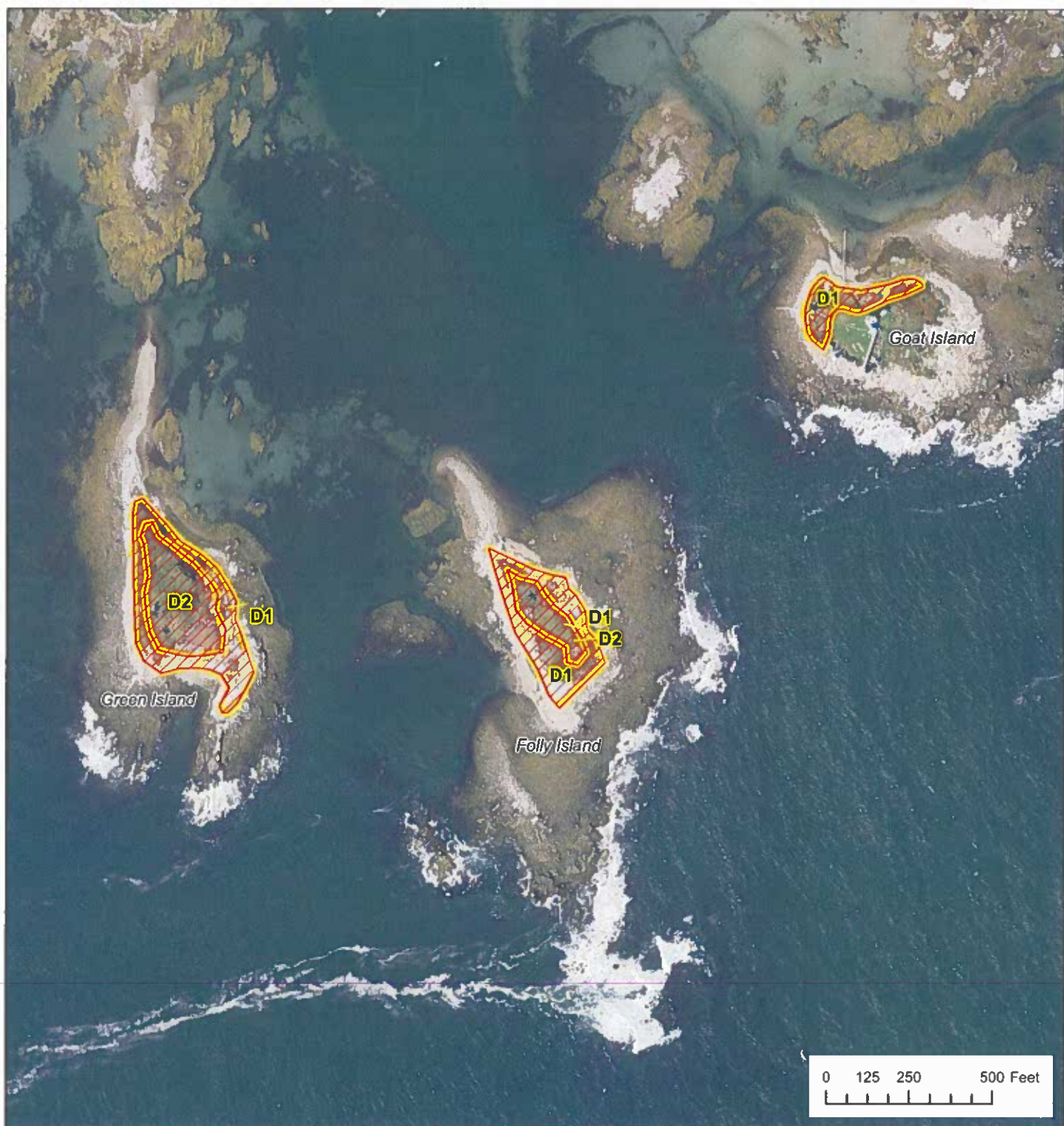


Maine Geological Survey

Address: 93 State House Station, Augusta, Maine 04333
Telephone: 207-287-2801 **E-mail:** mgs@maine.gov
Home page: www.maine.gov/dacf/mgs/

Coastal Sand Dune Geology Vaughn Island, Kennebunkport, Maine

by Peter A. Slovinsky and Stephen M. Dickson
 Open-File Map No. 23-66
 2023



Maine Geological Survey

Address: 93 State House Station, Augusta, Maine 04333
Telephone: 207-287-2801 **E-mail:** mgs@maine.gov
Home page: www.maine.gov/dacf/mgs/

Coastal Sand Dune Geology Green, Foley, and Goat Islands, Kennebunkport, Maine

by Peter A. Slovinsky and Stephen M. Dickson

Open-File Map No. 23-67
2023



Maine Geological Survey

Address: 93 State House Station, Augusta, Maine 04333

Telephone: 207-287-2801 **E-mail:** mgs@maine.gov

Home page: www.maine.gov/dacf/mgs/

Coastal Sand Dune Geology Stage Island, Kennebunkport, Maine

by Peter A. Slovinsky and Stephen M. Dickson

Open-File Map No. 23-68
2023



Maine Geological Survey

Address: 93 State House Station, Augusta, Maine 04333
Telephone: 207-287-2801 **E-mail:** mgs@maine.gov
Home page: www.maine.gov/dacf/mgs/

Coastal Sand Dune Geology Nessler Point, Kennebunkport, Maine

by Peter A. Slovinsky and Stephen M. Dickson
Open-File Map No. 23-69
2023



Maine Geological Survey

Address: 93 State House Station, Augusta, Maine 04333
Telephone: 207-287-2801 **E-mail:** mgs@maine.gov
Home page: www.maine.gov/dacf/mgs/

Coastal Sand Dune Geology Marshall Point, Kennebunkport, Maine

by Peter A. Slovinsky and Stephen M. Dickson
 Open-File Map No. 23-70
 2023

BIDDEFORD

5 NEW MAPS

TIMBER ISLAND
TIMBER POINT
LILY POND
OCEAN AVENUE
CAMP ABENAKEE

2 SUPERSEDED MAPS

LITTLE RIVER
CURTIS & NEW BARN COVES
HORSESHOE COVE



Maine Geological Survey

Address: 93 State House Station, Augusta, Maine 04333
Telephone: 207-287-2801 **E-mail:** mgs@maine.gov
Home page: www.maine.gov/dacf/mgs/

Coastal Sand Dune Geology

Goose Rocks Beach, Little River,
 Biddeford and Kennebunkport, Maine

by Peter A. Slovinsky and Stephen M. Dickson

Open-File Map No. 23-74
 2023

This map supersedes Open-File Map No. 11-98



Maine Geological Survey

Address: 22 State House Station
Augusta, Maine 04333

Telephone: 207-287-2801
E-mail: mgs@maine.gov

Home page: <http://www.maine.gov/doc/nrimc/nrimc.htm>

See back for description of map units.

Coastal Sand Dune Geology

Goose Rocks Beach, Little River, Kennebunkport, Maine

by Peter A. Slovinsky and Stephen M. Dickson

Open-File No. 11-98

2011 **SUPERSEDED**



Maine Geological Survey

Address: 93 State House Station, Augusta, Maine 04333
Telephone: 207-287-2801 **E-mail:** mgs@maine.gov
Home page: www.maine.gov/dacf/mgs/

Coastal Sand Dune Geology Timber Island, Biddeford, Maine

by Peter A. Slovinsky and Stephen M. Dickson
Open-File Map No. 23-75
2023



Maine Geological Survey

Address: 93 State House Station, Augusta, Maine 04333
Telephone: 207-287-2801 **E-mail:** mgs@maine.gov
Home page: www.maine.gov/dacf/mgs/

Coastal Sand Dune Geology Timber Point, Biddeford, Maine

by Peter A. Slovinsky and Stephen M. Dickson
 Open-File Map No. 23-76
 2023



Maine Geological Survey

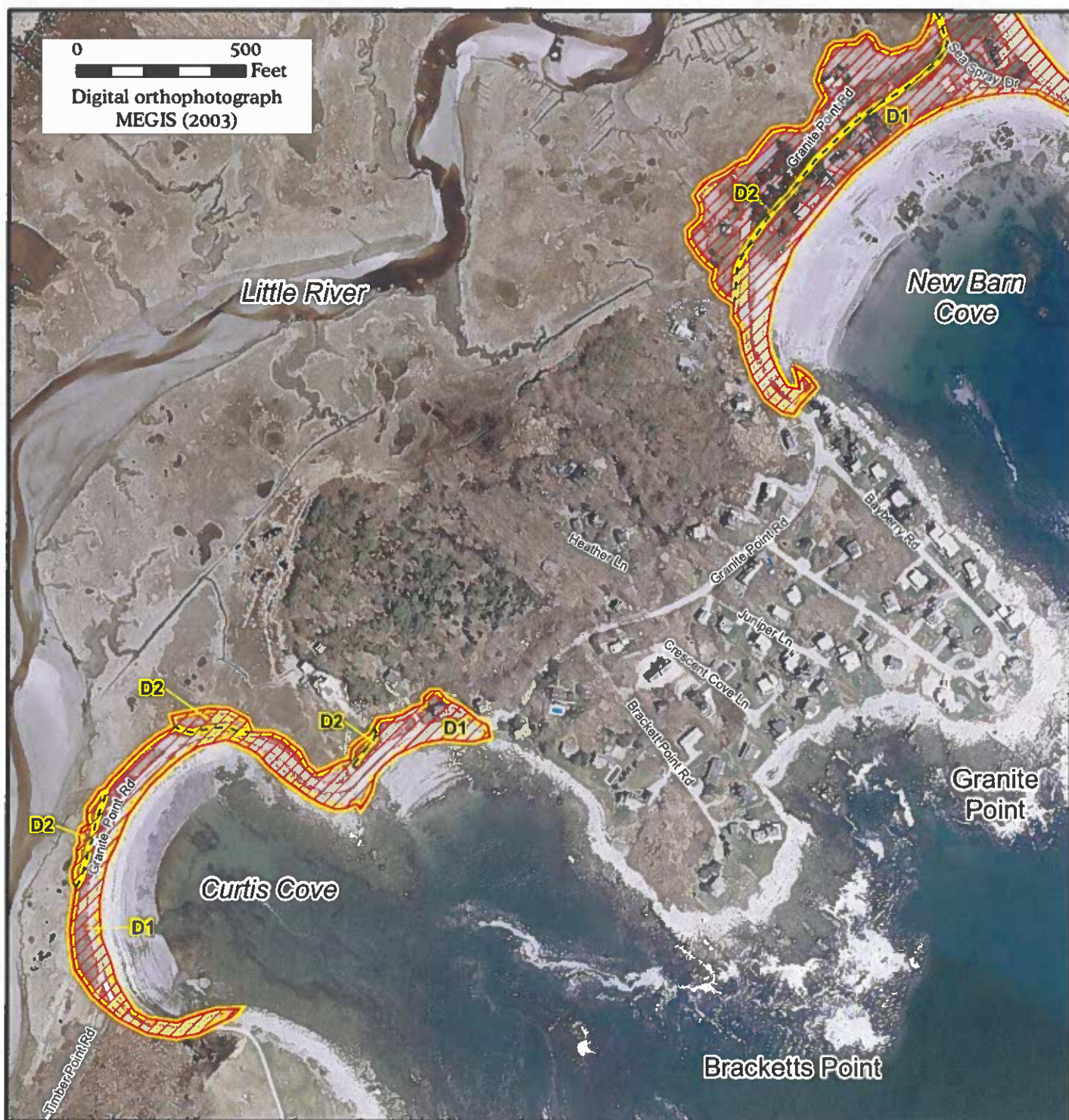
Address: 93 State House Station, Augusta, Maine 04333
Telephone: 207-287-2801 **E-mail:** mgs@maine.gov
Home page: www.maine.gov/dacf/mgs/

Coastal Sand Dune Geology Curtis Cove, New Barn Cove, Biddeford, Maine

by Peter A. Slovinsky and Stephen M. Dickson

Open-File Map No. 23-77
 2023

This map supersedes Open-File Map No. 11-99



Maine Geological Survey

Address: 22 State House Station
Augusta, Maine 04333

Telephone: 207-287-2801

E-mail: mgs@maine.gov

Home page: <http://www.maine.gov/doc/nrimc/nrimc.htm>

See back for description of map units.

Coastal Sand Dune Geology

Curtis Cove, New Barn Cove,
Biddeford, Maine

by Peter A. Slovinsky and Stephen M. Dickson

Open-File No. 11-99

2011 **SUPERSEDED**



Maine Geological Survey

Address: 93 State House Station, Augusta, Maine 04333
Telephone: 207-287-2801 **E-mail:** mgs@maine.gov
Home page: www.maine.gov/dacf/mgs/

Coastal Sand Dune Geology Horseshoe Cove, Biddeford, Maine

by Peter A. Slovinsky and Stephen M. Dickson
 Open-File Map No. 23-78
 2023

This map supersedes Open-File Map No. 11-100



Maine Geological Survey

Address: 22 State House Station
Augusta, Maine 04333

Telephone: 207-287-2801
E-mail: mgs@maine.gov

Home page: <http://www.maine.gov/doc/nrimc/nrimc.htm>

See back for description of map units.

Coastal Sand Dune Geology Horseshoe Cove, Biddeford, Maine

by Peter A. Slovinsky and Stephen M. Dickson

Open-File No. 11-100

2011 **SUPERSEDED**



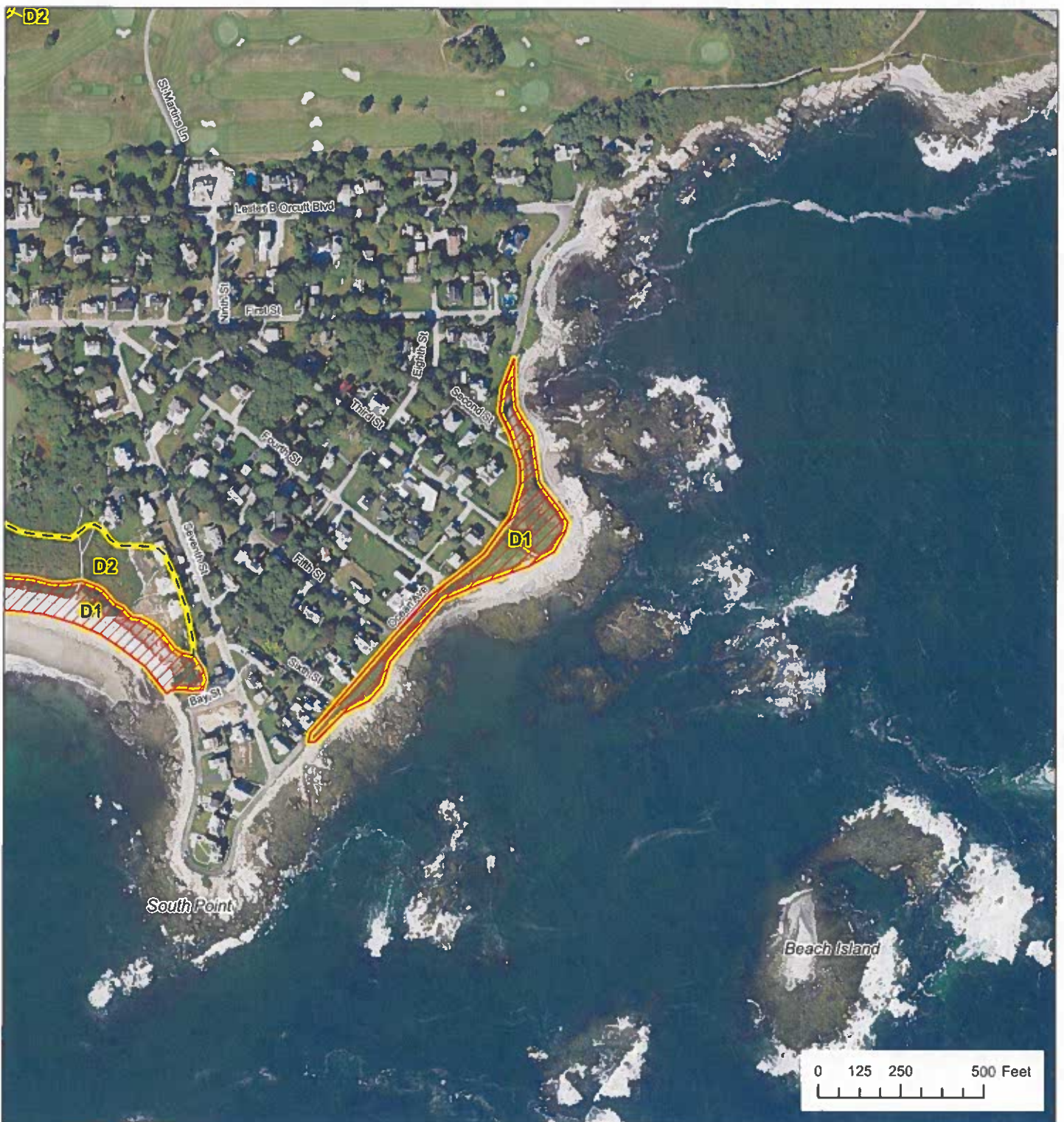
Maine Geological Survey

Address: 93 State House Station, Augusta, Maine 04333
Telephone: 207-287-2801 **E-mail:** mgs@maine.gov
Home page: www.maine.gov/dacf/mgs/

Coastal Sand Dune Geology

Lily Pond, Biddeford, Maine

by Peter A. Slovinsky and Stephen M. Dickson
 Open-File Map No. 23-79
 2023



Maine Geological Survey

Address: 93 State House Station, Augusta, Maine 04333
Telephone: 207-287-2801 **E-mail:** mgs@maine.gov
Home page: www.maine.gov/dacf/mgs/

Coastal Sand Dune Geology

Ocean Avenue, Biddeford, Maine

by Peter A. Slovinsky and Stephen M. Dickson
 Open-File Map No. 23-84
 2023



Maine Geological Survey

Address: 93 State House Station, Augusta, Maine 04333
Telephone: 207-287-2801 **E-mail:** mgs@maine.gov
Home page: www.maine.gov/dacf/mgs/

Coastal Sand Dune Geology Camp Abenakee, Biddeford, Maine

by Peter A. Slovinsky and Stephen M. Dickson
 Open-File Map No. 23-85
 2023