

**Sagadahoc County to Washington County**  
**2023 Coastal Sand Dune Breakdown**

Total 2023 Sand Dune Maps:	418
No Change to Existing 2011 Maps:	11
Change to 2011 Map:	3
New Maps (not previously mapped as a sand dune):	404

**Existing/Changes to Maps:**

- Maps start in Phippsburg which currently has 13 maps most of which have not changed.
- Except for Phippsburg and 3 maps in Georgetown and Bristol, the remaining 400+ maps are brand new.

**New Maps:**

- Many of the new maps affect uninhabited islands or areas that do not support development.
- Stand outs include:
  - New D1 & D2 to three small but developed areas in Georgetown.
  - New D1 & D2 to multiple areas in Owls Head, one which affects Owls Head Harbor.
  - New D1 & D2 in a small, developed area on Bartlett Harbor Road, Bartlett Harbor, North Haven.
  - New D1 & D2 along the length of Lincolville Beach, Lincolville, including developed areas containing restaurants, hotels, real estate offices, etc.
  - New D2 along Dock Road in Stockton Springs. Includes Stockton Harbor Sailing Center and The Club Marina and Bar.
  - New D1 & D2 to multiple small but developed areas in Southwest Harbor.
  - New D1 & D2 in Spurling Cove, Cranberry Isles. Includes Newman & Gray Boatyard, US Postal Service, and Town Dock parking lot.
  - New D1 & D2 to developed areas along Sand Beach and The Maypole, Cranberry Isles.
  - New D1 & D2 to small, developed area along Deep Cove in Winter Harbor.
  - New D1 & D2 to a developed area along Sandy River Beach in Jonesport.
  - New D1 & D2 small but developed area along Starboard Creek in Machiasport.



## Maine Geological Survey

**Address:** 93 State House Station, Augusta, Maine 04333  
**Telephone:** 207-287-2801 **E-mail:** mgs@maine.gov  
**Home page:** [www.maine.gov/dacf/mgs/](http://www.maine.gov/dacf/mgs/)

## Coastal Sand Dune Geology Kennebec and Bay Points, Georgetown, Maine

by Peter A. Slovinsky and Stephen M. Dickson  
 Open-File Map No. 23-178  
 2023





## Maine Geological Survey

**Address:** 93 State House Station, Augusta, Maine 04333  
**Telephone:** 207-287-2801 **E-mail:** [mgs@maine.gov](mailto:mgs@maine.gov)  
**Home page:** [www.maine.gov/dacf/mgs/](http://www.maine.gov/dacf/mgs/)

## Coastal Sand Dune Geology Indian Point South, Georgetown, Maine

by Peter A. Slovinsky and Stephen M. Dickson  
 Open-File Map No. 23-179  
 2023





## Maine Geological Survey

**Address:** 93 State House Station, Augusta, Maine 04333

**Telephone:** 207-287-2801 **E-mail:** [mgs@maine.gov](mailto:mgs@maine.gov)

**Home page:** [www.maine.gov/dacf/mgs/](http://www.maine.gov/dacf/mgs/)

## Coastal Sand Dune Geology

Half Mile Beach, Reid State Park,  
Georgetown, Maine

by Peter A. Slovinsky and Stephen M. Dickson

Open-File Map No. 23-182  
2023

This map supersedes Open-File Map No. 11-144





## Maine Geological Survey

**Address:** 93 State House Station, Augusta, Maine 04333  
**Telephone:** 207-287-2801 **E-mail:** mgs@maine.gov  
**Home page:** [www.maine.gov/dacf/mgs/](http://www.maine.gov/dacf/mgs/)

## Coastal Sand Dune Geology Crockett and Ginn Points, Owls Head, Maine

by Peter A. Slovinsky and Stephen M. Dickson  
 Open-File Map No. 23-224  
 2023





## Maine Geological Survey

**Address:** 93 State House Station, Augusta, Maine 04333  
**Telephone:** 207-287-2801 **E-mail:** mgs@maine.gov  
**Home page:** [www.maine.gov/dacf/mgs/](http://www.maine.gov/dacf/mgs/)

## Coastal Sand Dune Geology Owls Head Harbor, Owls Head, Maine

by Peter A. Slovinsky and Stephen M. Dickson  
 Open-File Map No. 23-229  
 2023





## Maine Geological Survey

**Address:** 93 State House Station, Augusta, Maine 04333  
**Telephone:** 207-287-2801 **E-mail:** mgs@maine.gov  
**Home page:** [www.maine.gov/dacf/mgs/](http://www.maine.gov/dacf/mgs/)

## Coastal Sand Dune Geology Bartlett Harbor, North Haven, Maine

by Peter A. Slovinsky and Stephen M. Dickson  
 Open-File Map No. 23-248  
 2023





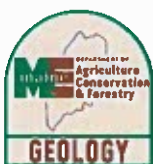
## Maine Geological Survey

**Address:** 93 State House Station, Augusta, Maine 04333  
**Telephone:** 207-287-2801 **E-mail:** mgs@maine.gov  
**Home page:** [www.maine.gov/dacf/mgs/](http://www.maine.gov/dacf/mgs/)

## Coastal Sand Dune Geology Lincolnville Beach, Lincolnville, Maine

by Peter A. Slovinsky and Stephen M. Dickson  
 Open-File Map No. 23-266  
 2023





## Maine Geological Survey

**Address:** 93 State House Station, Augusta, Maine 04333

**Telephone:** 207-287-2801 **E-mail:** mgs@maine.gov

**Home page:** [www.maine.gov/dacf/mgs/](http://www.maine.gov/dacf/mgs/)

## Coastal Sand Dune Geology

Harbor View Drive, Stockton Springs,  
Maine

by Peter A. Slovinsky and Stephen M. Dickson

Open-File Map No. 23-292  
2023





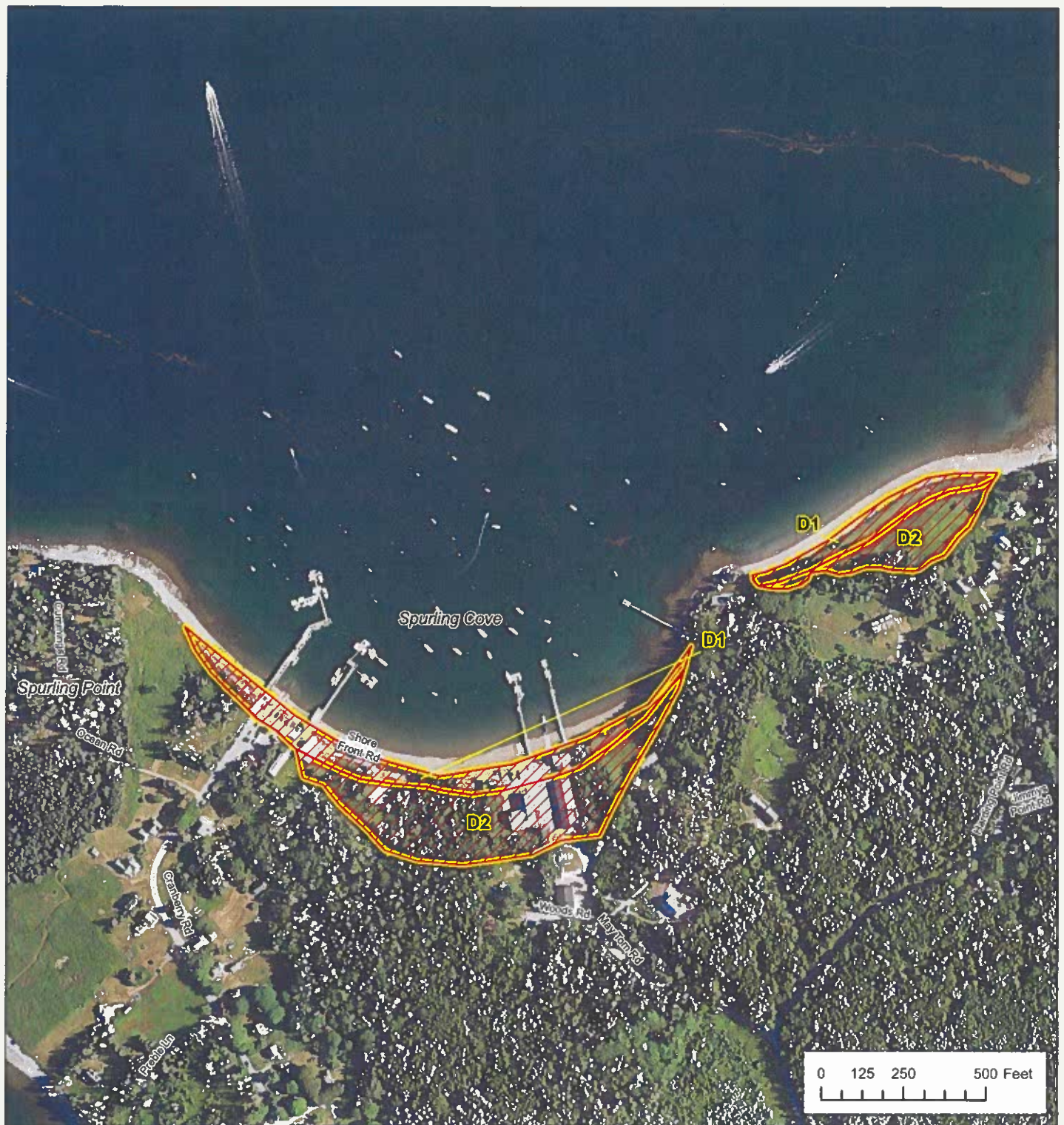
## Maine Geological Survey

**Address:** 93 State House Station, Augusta, Maine 04333  
**Telephone:** 207-287-2801 **E-mail:** mgs@maine.gov  
**Home page:** [www.maine.gov/dacf/mgs/](http://www.maine.gov/dacf/mgs/)

## Coastal Sand Dune Geology Dock Road, Stockton Springs, Maine

by Peter A. Slovinsky and Stephen M. Dickson  
 Open-File Map No. 23-293  
 2023





## Maine Geological Survey

**Address:** 93 State House Station, Augusta, Maine 04333

**Telephone:** 207-287-2801 **E-mail:** mgs@maine.gov

**Home page:** [www.maine.gov/dacf/mgs/](http://www.maine.gov/dacf/mgs/)

## Coastal Sand Dune Geology Spurling Cove, Cranberry Isles, Maine

by Peter A. Slovinsky and Stephen M. Dickson

Open-File Map No. 23-407  
2023





## Maine Geological Survey

**Address:** 93 State House Station, Augusta, Maine 04333

**Telephone:** 207-287-2801 **E-mail:** mgs@maine.gov

**Home page:** [www.maine.gov/dacf/mgs/](http://www.maine.gov/dacf/mgs/)

## Coastal Sand Dune Geology Sand Beach and The Maypole, Cranberry Isles, Maine

by Peter A. Slovinsky and Stephen M. Dickson

Open-File Map No. 23-416  
2023





## Maine Geological Survey

**Address:** 93 State House Station, Augusta, Maine 04333

**Telephone:** 207-287-2801 **E-mail:** mgs@maine.gov

**Home page:** [www.maine.gov/dacf/mgs/](http://www.maine.gov/dacf/mgs/)

## Coastal Sand Dune Geology

Deep Cove, Winter Harbor, Maine

by Peter A. Slovinsky and Stephen M. Dickson

Open-File Map No. 23-437

2023





## Maine Geological Survey

**Address:** 93 State House Station, Augusta, Maine 04333  
**Telephone:** 207-287-2801 **E-mail:** mgs@maine.gov  
**Home page:** [www.maine.gov/dacf/mgs/](http://www.maine.gov/dacf/mgs/)

## Coastal Sand Dune Geology Sandy River Beach, Jonesport, Maine

by Peter A. Slovinsky and Stephen M. Dickson  
 Open-File Map No. 23-509  
 2023





## Maine Geological Survey

**Address:** 93 State House Station, Augusta, Maine 04333

**Telephone:** 207-287-2801 **E-mail:** mgs@maine.gov

**Home page:** [www.maine.gov/dacf/mgs/](http://www.maine.gov/dacf/mgs/)

## Coastal Sand Dune Geology Starboard Creek, Machiasport, Maine

by Peter A. Slovinsky and Stephen M. Dickson

Open-File Map No. 23-525  
2023